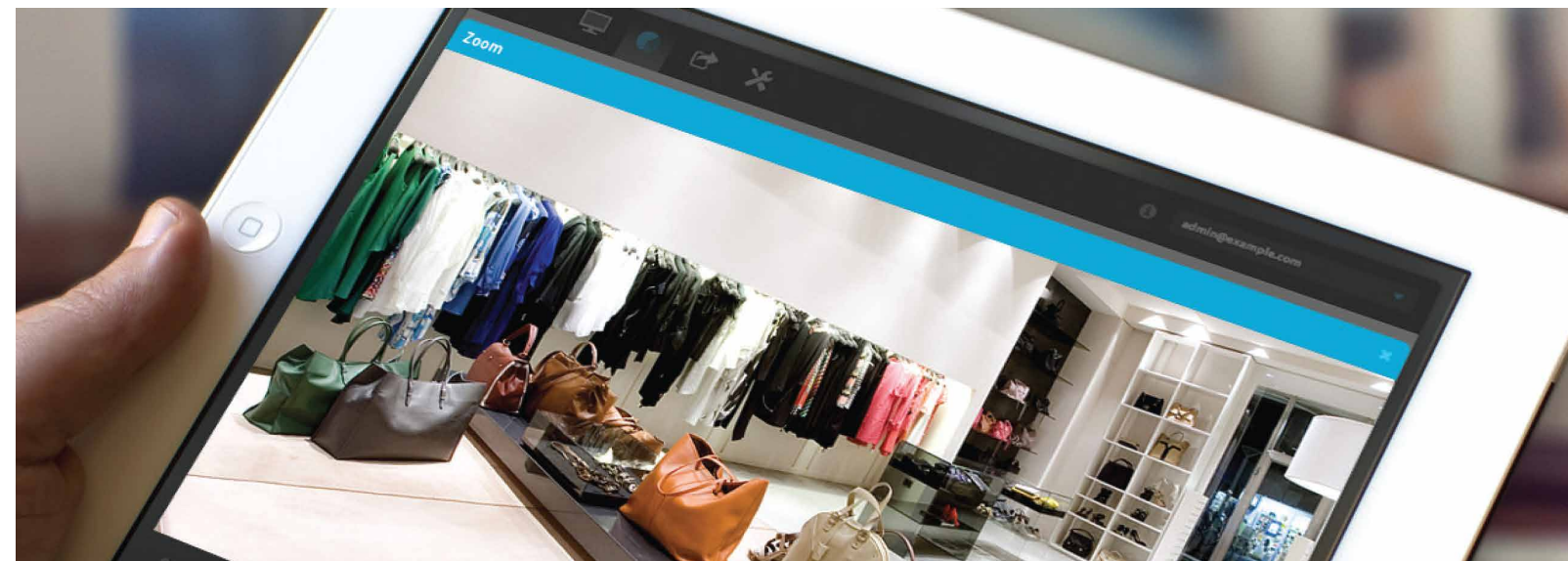


SELL MORE and SAVE MORE by using powerful retail technology



Hong Kong

1/F, Guardforce Centre, 3 Hok Yuen Street East,
Hung Hom, Kowloon, Hong Kong
Tel: +852 2765 7654 Fax: +852 2333 8650
Email: info@guardforce.com.hk
Website: www.guardforce.com.hk

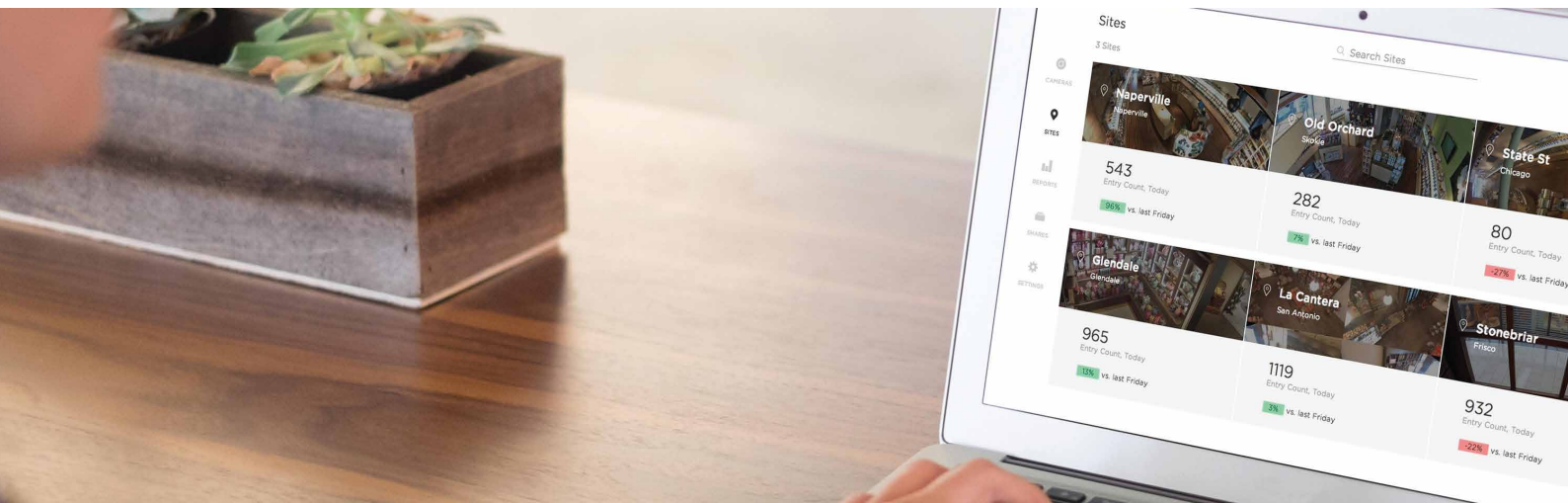
Macau

Av. Venceslau de Morais, Edf. Ind. Keck Seng,
Fase III, 2N, Macau
Tel: +853 2848 1236 Fax: +853 2841 0202
Email: info@guardforce.com.mo
Website: www.guardforce.com.mo

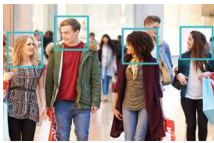
Thailand

1780 Teo Hong Bangna Building,
Bangna-Trad Road, Bangna,
Bangkok, Thailand 10260
Tel: +66 2 746 7000 Fax: +66 2 746 7001
Email: info@guardforce.co.th
Website: www.guardforce.co.th

Retail Analytic Solution



In the era of big data, it takes hefty investment to obtain powerful customer data for effective marketing. Retail stores equipped with CCTV systems are in fact sitting on a gold mine of big data. All they need to do is make use of technology to tap the data and such data will help retailers make **optimal management decisions** as well as **how to adjust store or marketing strategies** to achieve the goal of **increasing revenue** or **reducing cost**. **Retail analytic solution** that can turn video images captured from CCTV to useful data.



People Counting
Delivers data on customer flow, identify peak traffic period by hours of the day, days of the week and time of the year



Pathmap
Identifies the direction customers take after entering a store and the pathways they travel in the store



Visual Insight (Heat map)
Identifies which areas of a store have the most or the least customers in different time periods



Dwelling / Occupancy Analysis
Works out how long customers stay in a particular location, leveraging the people counting feature



Privacy Protection
Able to block out people in visual images to enhance privacy protection for customers



Multiple Stores Comparison
Real-time compares customer traffic and behavior in different stores



Detailed / Personalized Reports
Generates user-friendly charts or data reports and accessible via clouds and mobile devices



Staff Management
Optimizes staff placement by understanding customer trends and enrich customers' experience & increase their loyalty

Benefits

Leverages existing CCTV

Cloud storage allows flexibility

Economic and scalable

Non-intrusive

User-friendly with graphic rendering

Easy to install

Facial Recognition CRM

Retail stores can make use of face recognition technology to **identify and analysis customer preferences**. Quickly and accurately recognizes an identified person with our robust face recognition engine- even when on the move! This solution is optimized for uses such as **access control and time and attendance management**. It's also ideal for **VIP and suspect recognition and notification**.



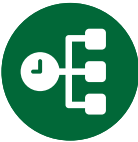
Guardforce Cash Machine

The end-to-end solution for retailers **alleviates staff workload and minimises their exposure and risks**, no more manual counting and verifying. Fully-automated cash deposit machine that presents the ultimate answer to retailers' distinctive needs for handling a vast amount of cash income.



Improve Efficiency

- Count 600 notes in a minute
- Recognise multiple currencies and accept 64 denominations
- Intuitive counterfeit note detection



Enhance Management

- High traceability
- Eliminate manual counting discrepancy
- Real-time management & monitoring via PCs or smart devices



Reduce Risks

- Authorised access only
- Enhanced cash safekeeping
- Prevent theft



Contact **(852) 2765 2861** to inquire the details and get your **free consultation**